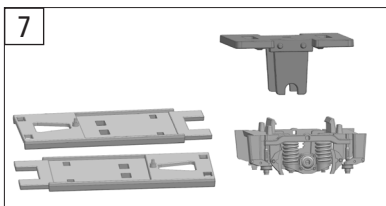
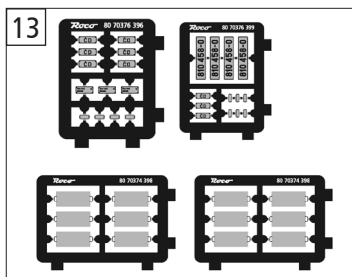
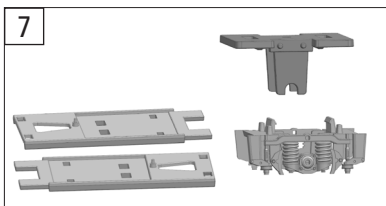
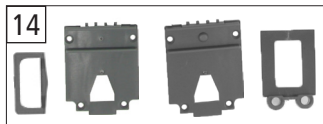
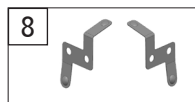
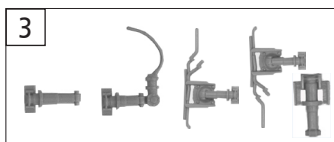
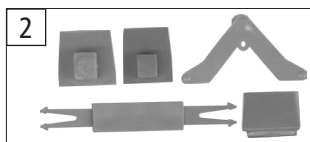


74242		CD	M 152	=	
Pos. Nr. Pos. no.	Beschreibung Description	Art.-Nr. Art. no.	Preisgruppe Price bracket		
1	Gehäuse BW kpl. Betr. nr. 010 180-8 Body complete Loco no. 010 180-8	148578	34		
2	TS - Lichtnagel Part set - Light pin	145173	6		
3	TS - Sitze TW + BW Part set - Seats	145139	9		
4	Rahmendeckel MW+BW Frame cover	148327	8		
5	TS - Leitung, Kessel Part set - Lines,tank	148328	7		
6	Brückenstecker PLUX-16 Jumper	129630	10		
7	Tritt Li+Re Treadle L+R	145143	6		
8	Platine analog BW PLUX-16 PCB analog	145164	18		
9	Inneneinrichtung BW Interior fittings	145160	8		
10	Platine Innenbel. TW/BW PCB interior lights	145150	18		
11	TS - Griffe Part set - Handles	146973	9		
12	Lichtnagel Light pin	145155	3		
13	TS - Fenster MW/BW Part set - Windows	145154	14		
14	Türgriffe BW Door handles	148336	7		

74242	CD	M 152	=	
Pos. Nr. Pos.no.	Beschreibung Description	Art.-Nr. Art.no.	Preisgruppe Price bracket	
1	Grundrahmen BW Base frame	148577	10	
2	TS - Deichsel Part set - Drawbar	148330	6	
3	TS - Zylinder Part set - Cilinder	148331	8	
4	Zugfeder D=2,5 L=2,7/5,8 mm Draw spring	86208	3	
5	Standardkupplung Standard coupling	89246	6	
6	TS-Bremsschläuche und Zughaken Part set brake tubes & coupling hooks	139832	7	
7	TS - DG-Blende BW Part set - Bogie frame	148339	10	
8	Radkontakt Li.+Re. BW Wheel contact L+R	145163	10	
9	Radsatz o.Zahnr. o.Haftr. BW Wheelset w/o gearwh. w/o traction tyre	148340	10	
10	Puffer BW Buffer	145397	5	
11	Zurüstbeutel Bag of accesories	148579	12	
12	Kurzkupplung Short coupling	115550	6	
13	Tafelsätze Set of panels	148344	24	
14	TS - Abdeckungen Part set - Covers	148332	7	
15	Klebe-Etiketten "WC" (ohne Abb.) "WC" Stickers (no ill.)	148326	9	



15 o. Abb. / no ill.
Klebe-Etiketten "WC"
"WC" Stickers

